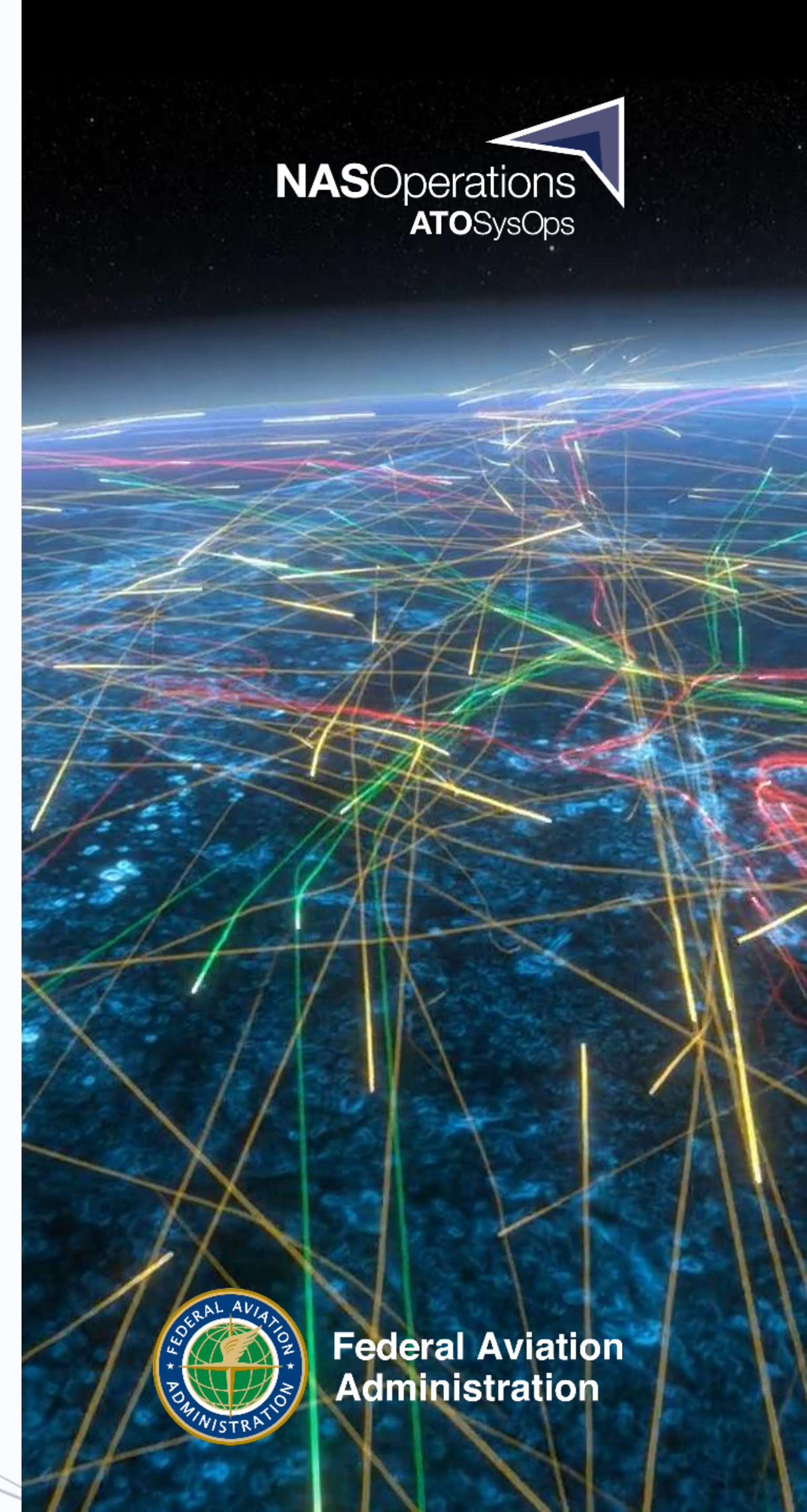


Use FSM to identify Fix Balance Candidates

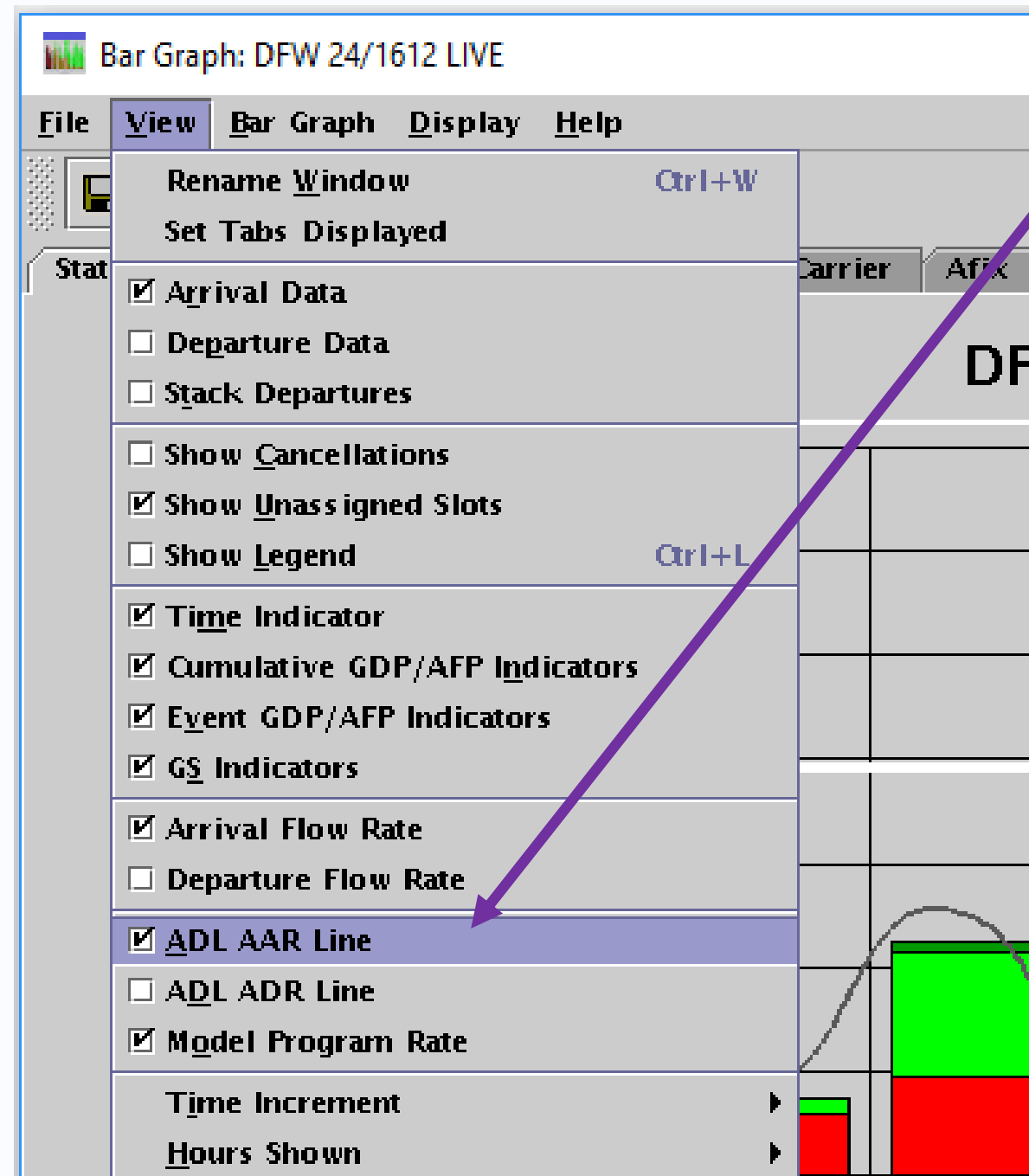
6/24/2020



Federal Aviation
Administration

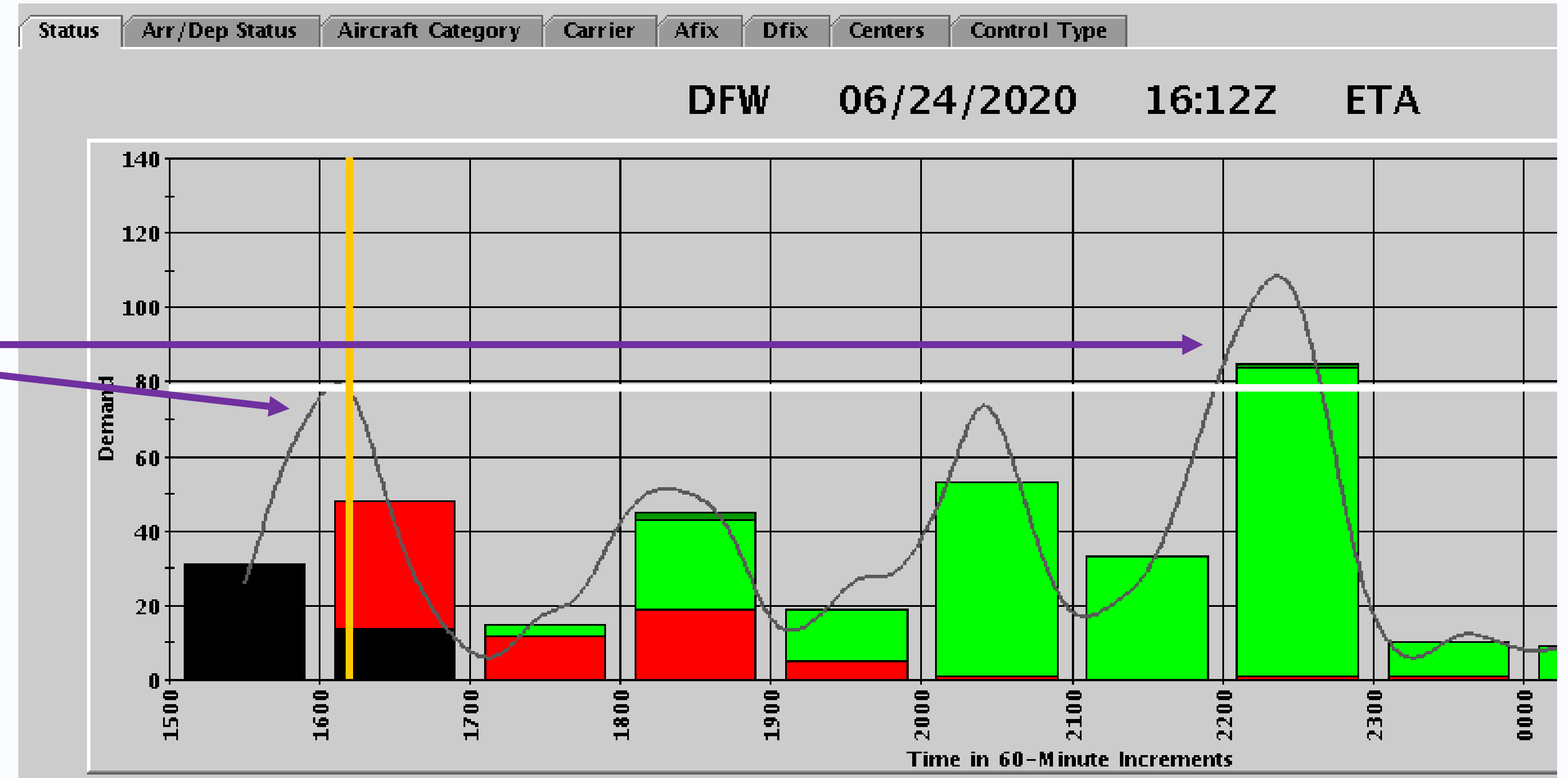
Arrival Flow Rate

Identify compacted demand that spans hours



View Menu,
ADL AAR Line

Displays compacted demand that starts in one hour and ends in another. Can also be seen by using the 15 minute button



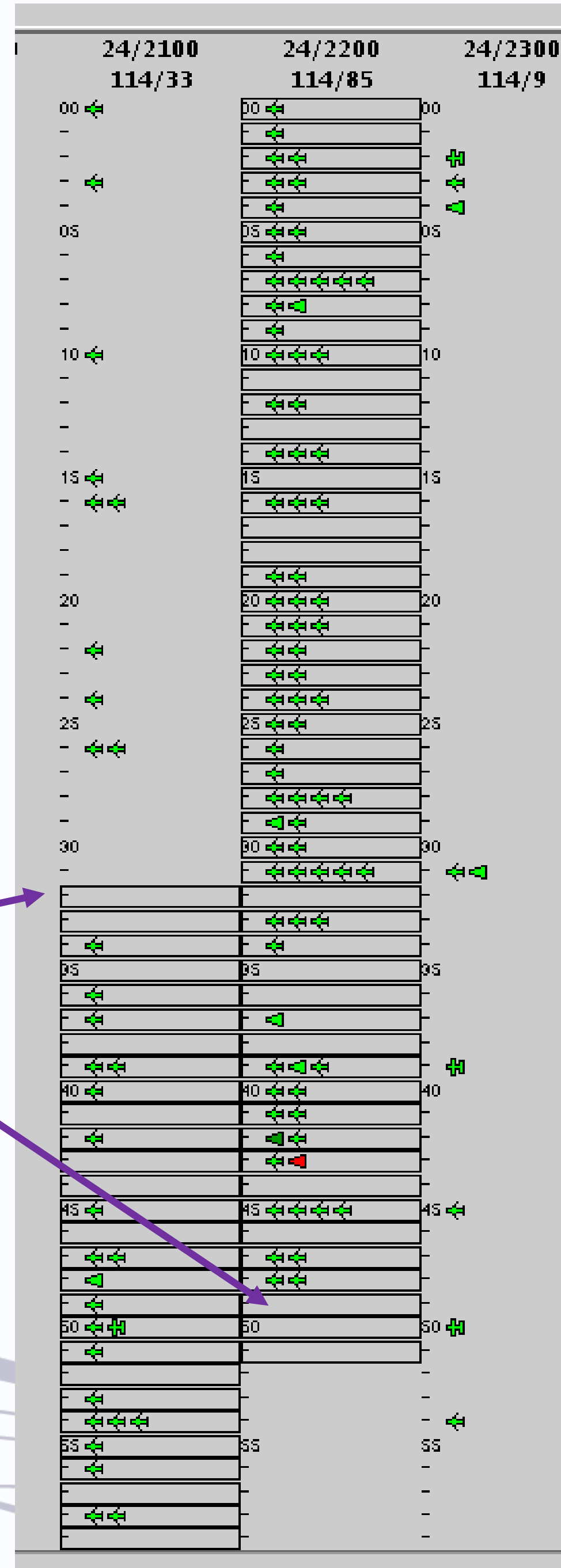
Display flights in an arrival bank

Click, shift click any timeframe desired

In the Time Line display

Click the minute at the start of desired time frame

Shift click the minute at the end of the desired time frame



Flight list opens with the selected flights, Group Flights by AFIX, DCENTR, ORIG

Click, shift click any timeframe desired

The flight list opens, Click View, then click Group Flights

The Group Flights window opens with the three levels blank, as you make a selection in the first group by level, the next one becomes enabled. At least one level must be selected to use the function.

In the top box select AFIX (Arrival Fix)
 In the middle box select DCENTR (Departure Center)
 In the bottom box select ORIG (Origin Airport)

Flight List: DFW 24/1627 LIVE

File View Flight List Help

DFW 06/24/2020 16:27Z

Current Info
 Data: Arrivals
 Filter(s): Ground Stopped OR Dep (Past ETD) OR Dep (No CTD) OR Dep (CTD Issued) OR Dep (CTD Other Element) OR Flight Active OR Arrived AND ETA between 24/2132 and 24/2251

	ACID	TYPE	ETD	ETA	DCENTR	ORIG	AFIX	DFIX	DEST
1	ASH5849	CRJ9	L24/2047	L24/2134	ZHU	HOU	BEREE	CRIED	DFW
2	ENY3302	E170	L24/1859	L24/2136	ZMA	EYW	BEREE	CORGI	DFW
3	AAL389	B738	L24/1935	L24/2137	ZMX	MMMX	BOOVE	-	DFW
4	AAL387	A319	L24/1939	L24/2139	ZMX	MMGL	BOOVE	-	DFW
5	ENY3695	E145	L24/2033	L24/2139	ZKC	COU	VKTRY	-	DFW
6	ENY4178	E170	L24/1914	L24/2140	ZDC	RDU	BEREE	LIB	DFW
7	EJA578	CL60	L24/1806	L24/2142	ZMA	TPA	BEREE	ENDED	DFW
8	AAL2203	A319	L24/1948	L24/2145	ZMP	MSP	VKTRY	OVR	DFW
9	DAL3065	A319	S24/2001	E24/2147	ZTL	ATL	BEREE	KAJIN	DFW
10	AAL2367	B738	L24/1942	L24/2147	ZLC	SLC	VKTRY	ROMMN	DFW
11	UPS2798	A306	L24/2006	L24/2148	ZID	SDF	BRDJE	CRRGO	DFW
12	AAL2345	B738	L24/1917	L24/2149	ZMA	MIA	BEREE	WINCO	DFW
13	FDY448	C208	S24/2025	E24/2150	ZME	HOT	BRDJE	-	DFW
14	ENY3697	E170	L24/1958	L24/2150	ZMX	MMLO	BOOVE	-	DFW
15	ENY3346	E170	L24/2048	L24/2151	ZKC	MCI	VKTRY	DOSOA	DFW
16	ENY3791	E135	L24/2039	L24/2154	ZHU	GPT	BEREE	-	DFW
17	ENY3339	E170	L24/1941	L24/2154	ZLC	BIL	VKTRY	BIL	DFW
18	AAL519	B738	L24/1823	L24/2154	ZBW	BOS	BRDJE	HYLND	DFW
19	AAL1215	B738	L24/1946	L24/2155	ZMX	MMPR	BOOVE	-	DFW
20	NK2227	A320	S24/1937	E24/2156	ZOB	DTW	BRDJE	JWELS	DFW
21	738	L24/1845	L24/2158	ZSE	PDX	VKTRY	RIVRR	DFW	
22	170	L24/1924	L24/2158	ZLC	BOI	VKTRY	BIL	DFW	
23	319	L24/1946	L24/2200	ZOB	CLE	BRDJE	MOHUM	DFW	
24	170	L24/2049	L24/2201	ZAB	ABQ	BOOVE	MNZNO	DFW	
25	738	L24/1857	L24/2202	ZNY	LGA	BRDJE	PARKE	DFW	
26	738	L24/1940	L24/2202	ZMA	RSW	BEREE	CSHEL	DFW	
27	738	L24/1925	L24/2203	ZDC	IAD	BRDJE	OTTTO	DFW	
28	170	L24/2116	L24/2203	ZME	XNA	BRDJE	-	DFW	
29	170	L24/2035	L24/2204	ZME	HSV	BRDJE	-	DFW	
30	319	L24/1957	L24/2205	ZTL	CLT	BRDJE	BOBZY	DFW	
31	738	L24/1949	L24/2205	ZJX	MCO	BEREE	CAMAN	DFW	
32	319	L24/2046	L24/2206	ZKC	STL	BRDJE	MAP	DFW	
33	319	L24/1921	L24/2207	ZDC	ORF	BEREE	-	DFW	
34	170	L24/2136	L24/2207	ZFW	SHV	BEREE	-	DFW	
35	170	L24/2024	L24/2207	ZID	LEX	VKTRY	-	DFW	

Group Flights

Group By: AFIX (Ascending)

Then By: DCENTR (Ascending)

Then By: ORIG (Ascending)

Buttons: Clear All, Help, Apply, OK, Cancel

Arrival Fix loading displayed with details available

AFIX DCENTR ORIG

- *ALL* (108)
 - BERE (20)
 - BOOVE (17)
 - BRDJE (33)
 - VKTRY (38)

AFIX	DCENTR	ORIG
1	ASI	
2	EN	
3	AA	
4	AA	
5	EN	

The arrival fixes and the flight counts are displayed, double clicking the folders expands down to centers and individual airports. Flights from that airport are displayed to the right

ALL (108)

- BERE (20)
- BOOVE (17)
- BRDJE (33)
- VKTRY (38)
 - ZAB (1)
 - ZAU (1)
 - ZDV (4)
 - ZFW (1)
 - ZID (1)
 - ZKC (4)
 - ZLA (7)
 - BUR (1)
 - LAS (2)
 - LAX (1)
 - PSP (1)
 - SAN (1)
 - SBA (1)
 - ZLC (7)
 - ZMP (4)
 - ZOA (4)
 - ZOB (1)
 - ZSE (2)
 - ZTL (1)

ACID	TYPE	ETD	ETA	DCENTR	ORIG	
1	AAL582	B738	L24/1947	L24/2216	ZLA	LAX



This technique can assist with identifying offload candidates to achieve arrival fix balancing.

Departure fix balancing can use the same technique using Departure Data, DFIX, ACENTR and DEST fields

