

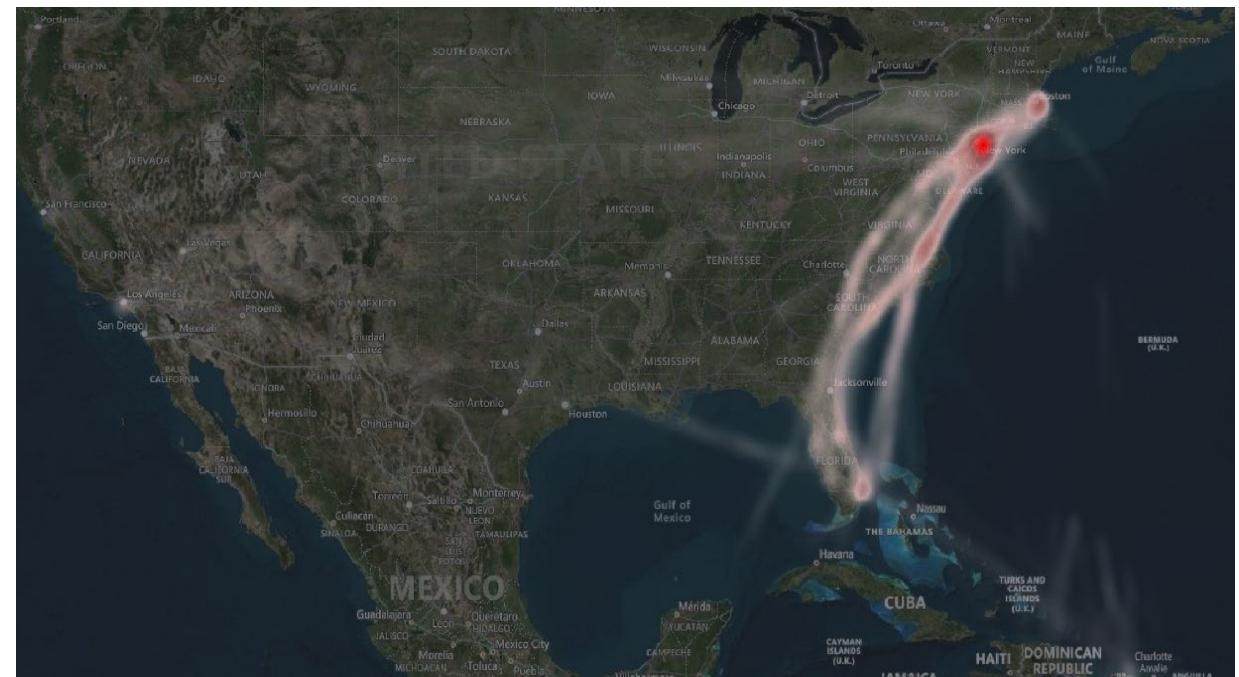
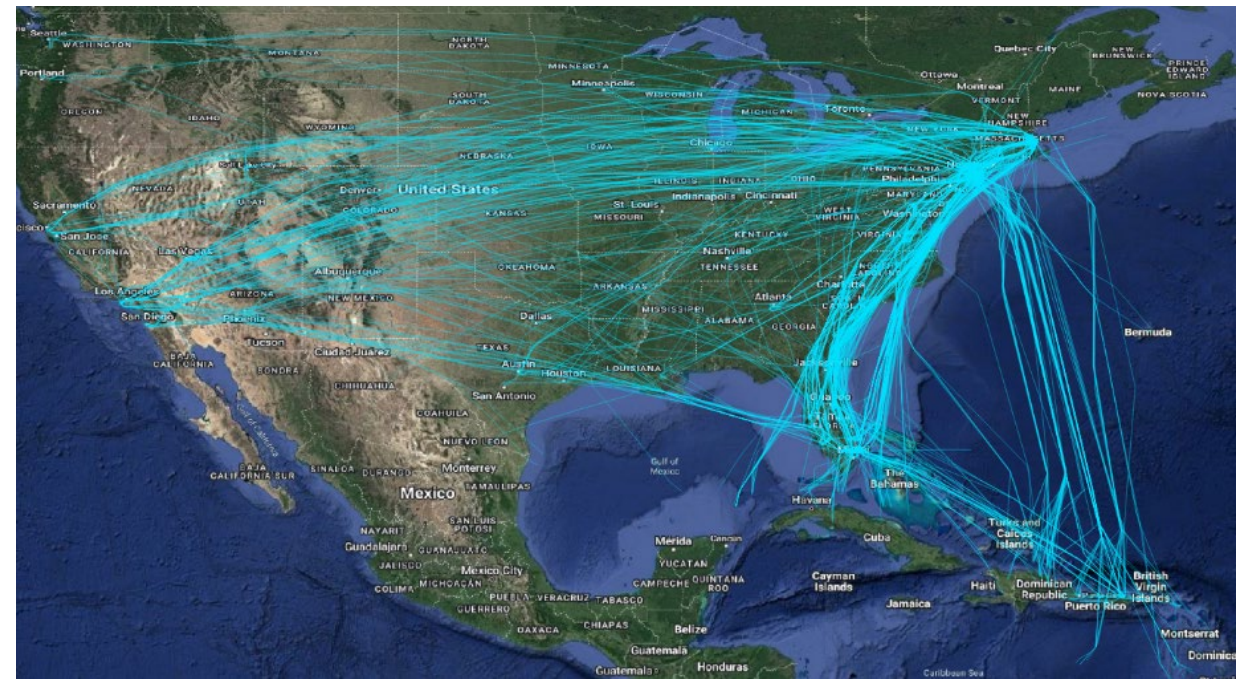


# JetBlue NCF/SWAP Briefing

April 2, 2025

Tom Lloyd

# jetBlue®



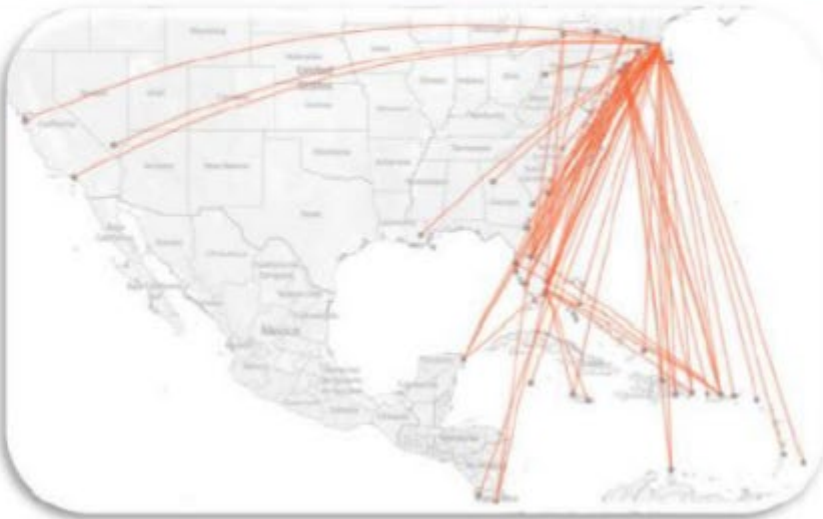


# Operational Changes – Doubling Down on our Strengths

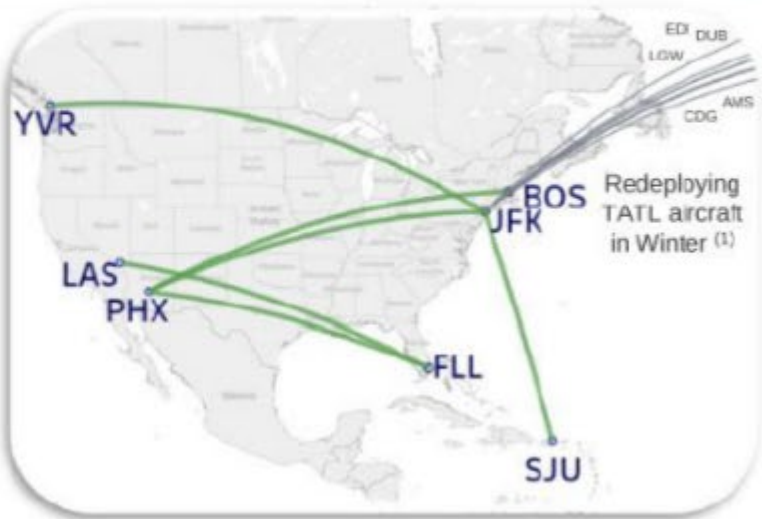
New Route Entrances



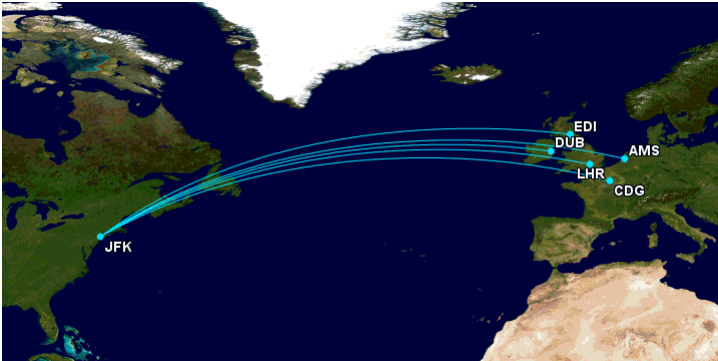
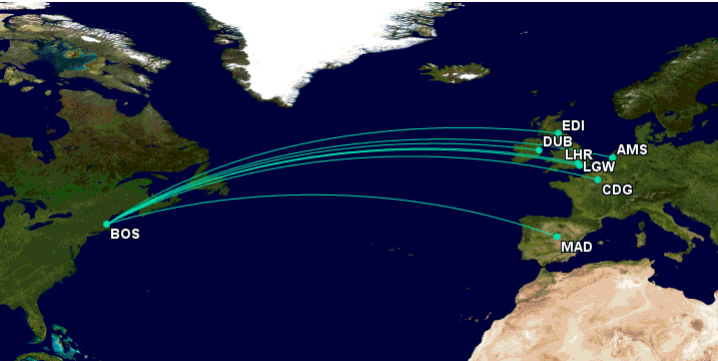
Additional Frequencies



Seasonalizing Mint Fleet



Increased Narrowbody Transatlantic Flying

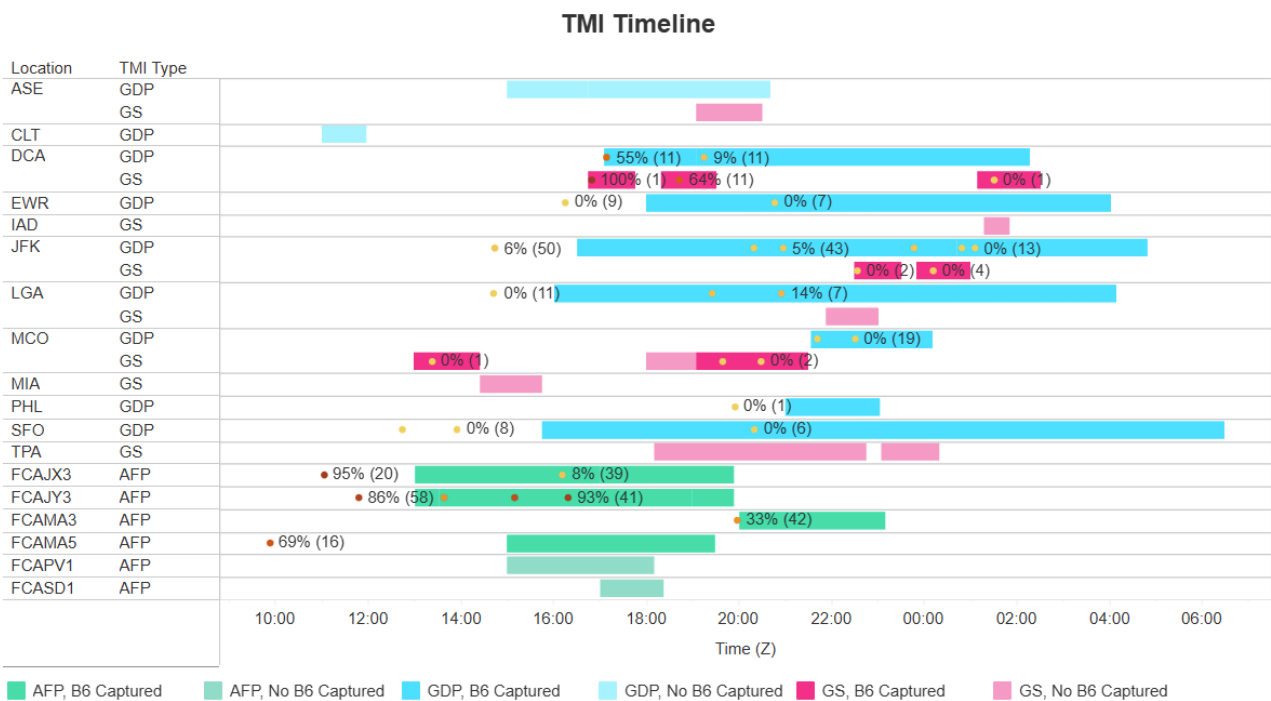
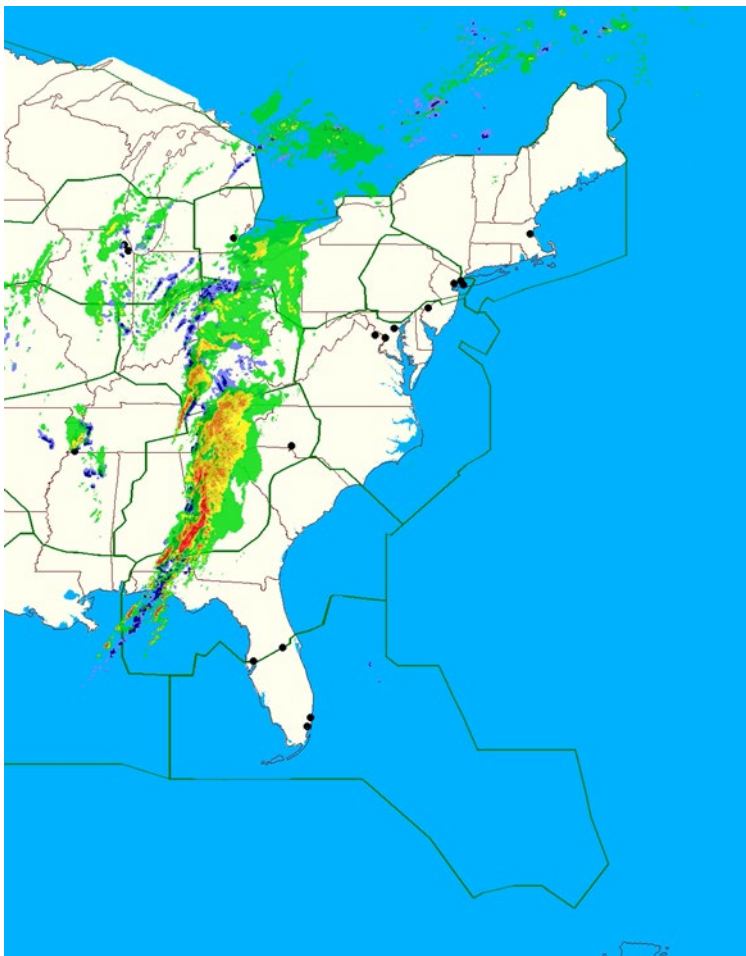


Short Haul Late & Early Flights



# Greatest Operational Challenges during Summer Convection: SE & NE WX

Example: Sunday March 16<sup>th</sup>

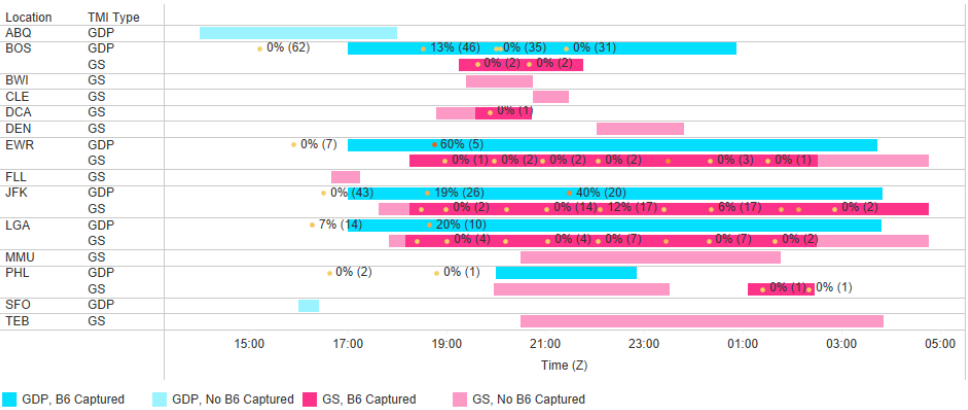
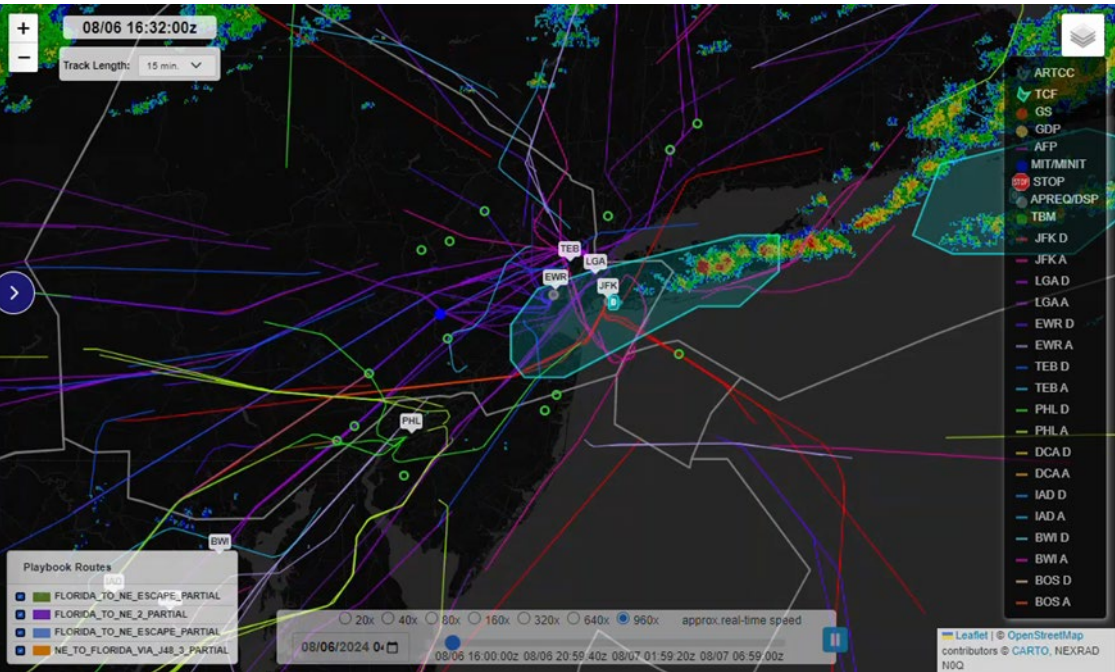


## JetBlue System Impacts

A0	B0	A0 (LAE)	A0 (ATC)
34%	53%	41%	26%
A14	B14	A14 (LAE)	A14 (ATC)
45%	73%	35%	21%

# Philosophy, triggers and processes for switching from recovery to rest...

## Case Study: 8/6/2024



→ Keeping WX & ATC Disruptions Mitigated to 1 Day

### NY3 OAL Impact and Cancel Timeline (8/6/2024)

