



Pre-SWAP Status & Priorities

Delta ATM
4/2/25

State of the Airline

- Centennial Year!
- Spring Break is underway
 - Between 3/15 – 4/19, appx 20.5 million customers on 177,000+ flights
 - 20 of the 36 days across this period will top 5,000 flights for DL/DC
- New Routes added for 2025
 - AUS > ECP / MSY / JAX / IND / MEM / SFO / TPA (+35% YOY)
 - ATL > RAK (GMMX)
 - LAX > MEL (YMML)
 - JFK > TLV (LLBG) *service restart
- Attention is now turning to summer preparation



SWAP Risks



Departures

Fix & route mgmt. (escape routes, TOS)
NE Throughput Document
FL Working Group recommendations

TMI Strategy

Early issuance is critical
Communication / collab / hotlines
TBFM vs GDP

Diversion Mgmt

Airport NOTAM closure
Dispersal for FL / NY mets

Construction

JFK, DTW, MSP top of mind

ODO Management

SAN
PHX

Canada

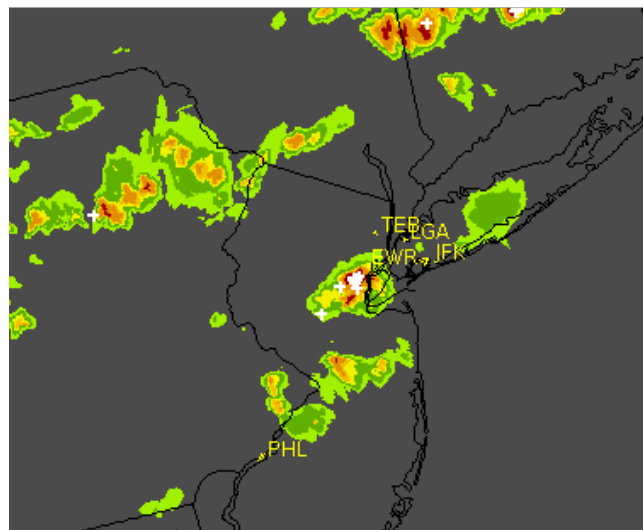
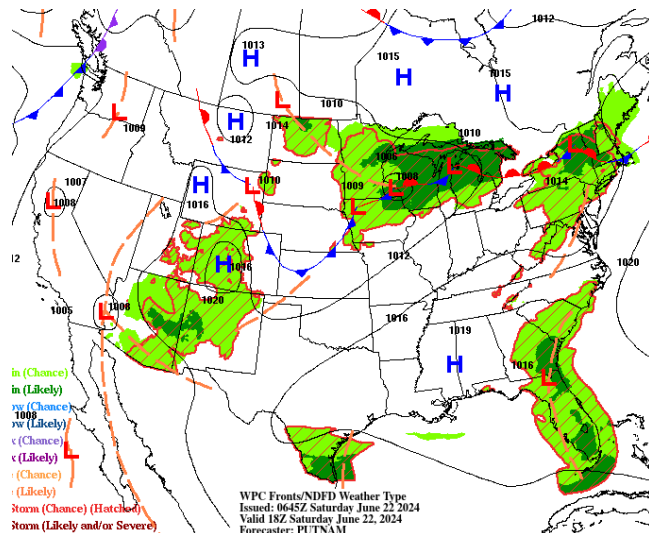
E Gates and CAN routes
FCAGAN

APT	Type	ADV	Sent	Effective	Rate
BOS	ALL+CZY_AP	61	22/1741	1739-0259	38/38/38/34/34/3
BOS	GDP CNX	1	23/0002	****-0002	
BOS	GDP CNX	1	23/0002	****-0002	
EWR	ALL+CZY_AP	77	22/1818	1816-0159	40/26/26/26/32/32/3
EWR	ALL+CZY_AP	99	22/2042	2038-0359	26/17/25/19/32/38/3
EWR	GDP CNX	8	23/0126	****-0126	
JFK	ALL+CZY_AP	71	22/1759	1900-0359	54/32/32/32/32/32/3
JFK	GDP CNX	14	23/0157	****-0157	
LGA	ALL+CZY_AP	109	22/2139	2138-0359	10/10/10/24/32/32/3
LGA	GDP CNX	11	23/0135	****-0135	
MSP	ALL+CZY_AP	80	22/1848	2100-0359	24
MSP	GDP CNX	2	23/0004	****-0004	

[Table of Contents](#)

GS Summary

APT	Type	ADV	Sent	Effective
BOS	1stTier+CZY_AP	54	22/1702	1700-1815
BOS	Manual	82	22/1858	1841-2000
EWR	Manual	49	22/1653	1645-1800
EWR	Manual	72	22/1801	1748-1900
EWR	Manual	87	22/1927	1913-2045
EWR	Manual	123	22/2326	2315-0030
EWR	Manual	3	23/0024	0006-0130
EWR	2ndTier	10	23/0130	0119-0230
EWR	2ndTier	15	23/0218	0119-0300
EWR	1stTier	16	23/0253	0119-0400
EWR	GS CNX	18	23/0323	****-0323
JFK	Manual	51	22/1655	1650-1800
JFK	GS CNX	68	22/1752	****-1752
LGA	Manual	50	22/1654	1650-1800
LGA	GS CNX	69	22/1753	****-1753
LGA	2ndTier+CZY_AP	79	22/1840	1815-1945
LGA	Manual	86	22/1923	1905-2045
LGA	Manual	88	22/1936	1905-2045
LGA	Manual	100	22/2048	2036-2145
LGA	Manual	124	22/2332	2314-0045
LGA	Manual	4	23/0038	0022-0145
LGA	Manual	12	23/0140	0118-0300



From IROP > Recovery

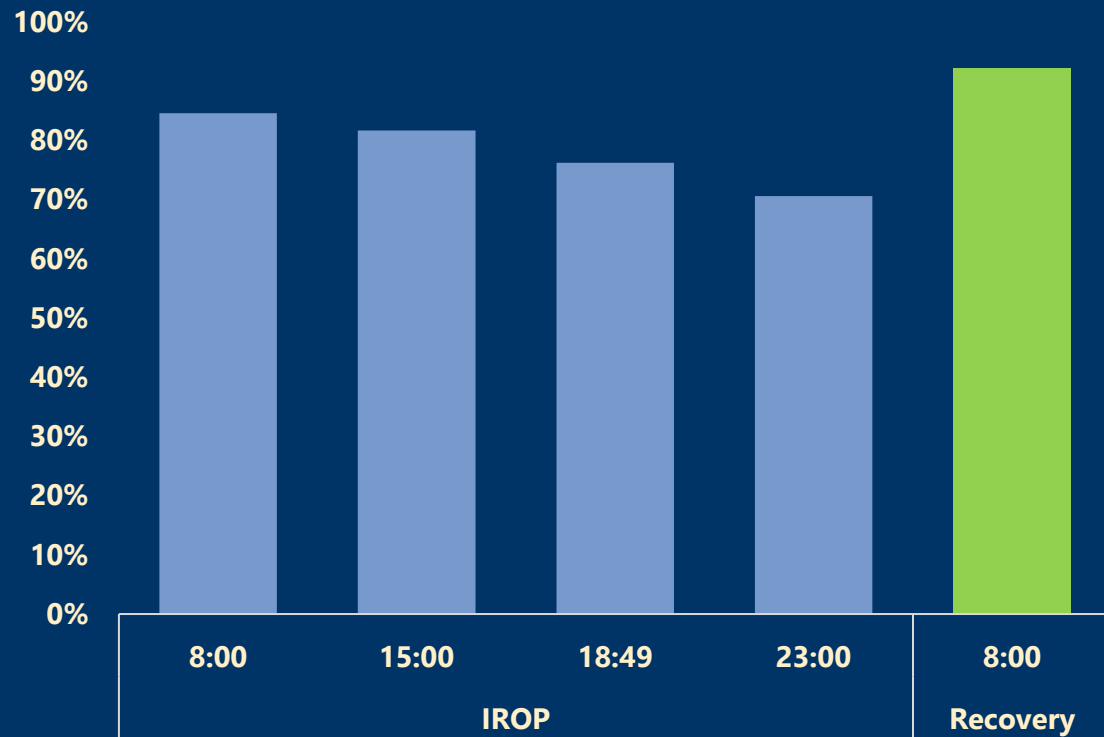
A significant IROP can drive disruption throughout the system

To reset, 2 priorities:

1. Reset the crews
2. Reposition the aircraft



A0 Progression during / after IROP



Setting up the Operation for Tomorrow

- Accomplish this through:
 - Running into the night
 - Requesting curfew extensions
 - Calling in extra staffing (SPT, Crew, Fleet)
 - Carrier only programs
 - Evaluating cancellations
- Additional considerations:
 - Number of hubs impacted (and which ones)
 - Crew health at start up today, throughout the day, and for tomorrow
 - Spares available



Q u e s t i o n s ?