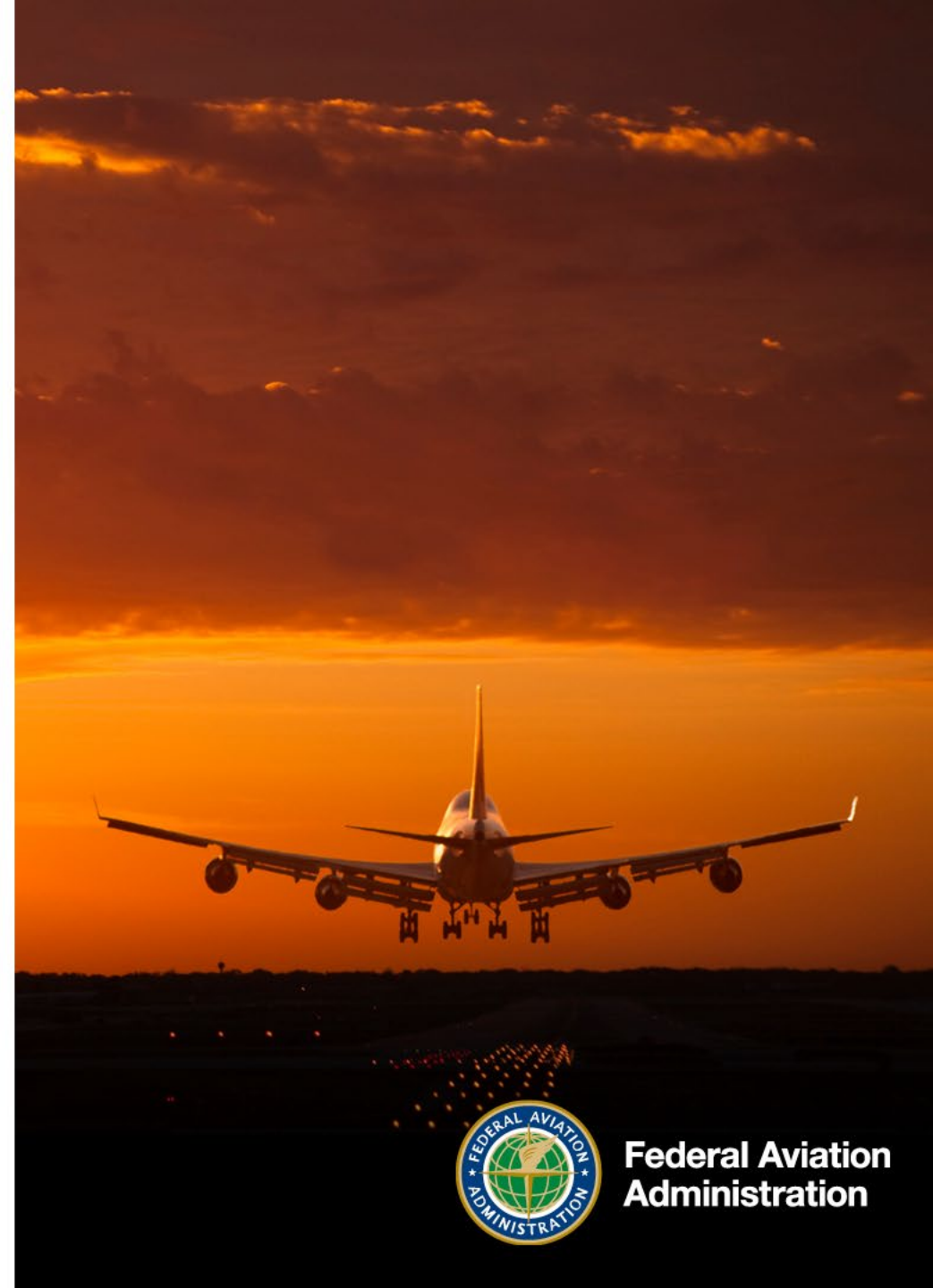


Collaborative Automation Team

CDM General Session

Presented to: CDM
By: John Shuler & Bob Nursey
Date: April 3, 2025



CAT Team Members

- **Greg Mullen- AAL**
- **Kevin Gunckel- DAL**
- **Stanley Wilson- FDX**
- **Jan Planten- NBAA**
- **Tim Matuszewski- NKS**
- **Charles Bland- UAL**
- **RB Haggerty- A4A**
- **John Shuler- FAA**
- **Bob Nursey- SWA**
- **Mel Sydnor- FAA/SLE**



Task 130 Substitution Rules for TFMS

- **Tasked with the goal of improving effectiveness of substitutions**
- **Task continues from previous task focused on data quality and stability in TFMS**
- **Focused on fluctuations in controlled estimated time enroute**
 - Relational to estimated time enroute
 - TFMS submission and processing rules



Research

- **Heavily supported by SME from Second Level Engineering**
- **Industry analysis of CDM data submissions and response form TFMS**
- **Deep examination of TFMS flight data records**
 - Timing of data submission
 - TMI event timing
 - TMI protective rules
 - Submitted values vs actual performance



TFMS Processing Rules

- **ETE Submission Rule**

- User cannot submit an ETE with 40% or greater difference from existing TFMS value (Scheduled or last update)

- **Controlled ETE Submission Rule**

- User cannot submit a change to CETE with 50% or greater difference from existing TFMS value (derived from ETE)



Data Submission Considerations

- **Schedule Flights**

- TFMS Ingest from OAG upload 24 hours ahead of flights schedule
- Scheduled flights are based on shortest distance with no weather.
- CDM Operator times submitted after TFMS schedule ingest.

- **Non-Scheduled Flights**

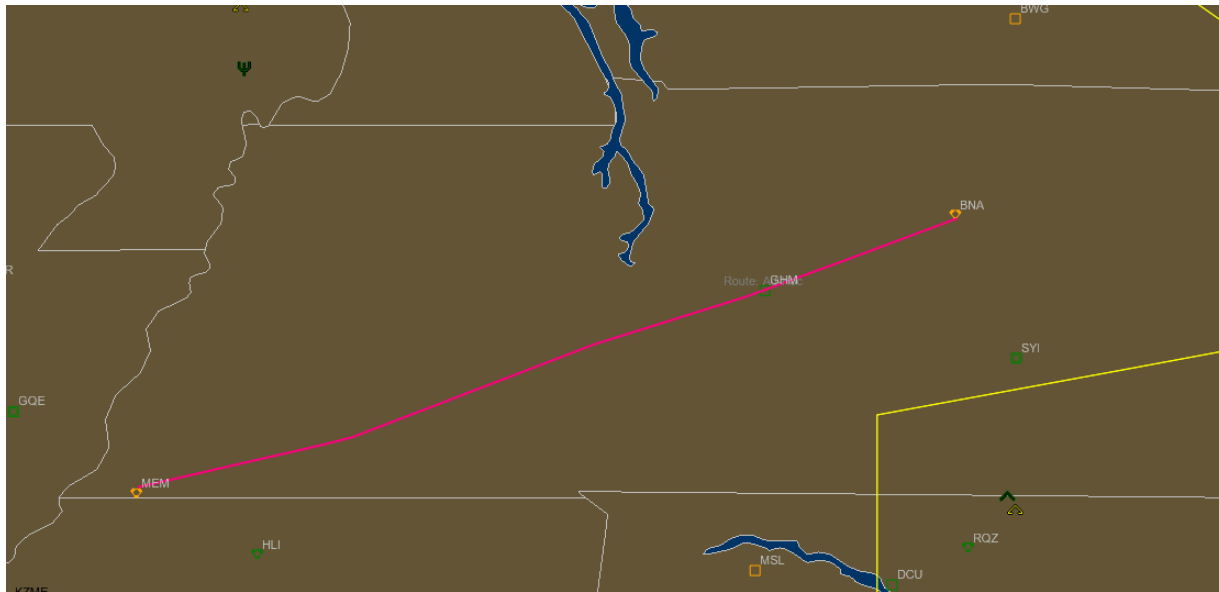
- Flight Create submitted by operator as soon as known.
- New flight still based on shortest distance with no weather
- SWIM messaging requires user to submit initial FC and wait 3 seconds before sending CDM time estimates

Neither scenario accounts for flight disruption

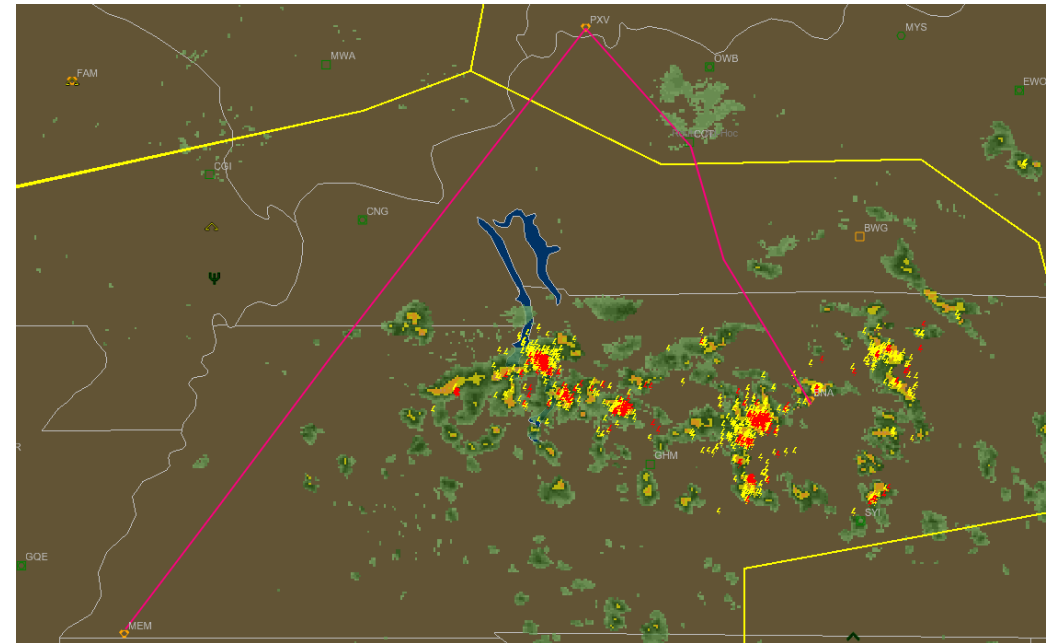


Disruption Effects

Route and ETE at Flight Create



Filed Route



Recommendations

- **CAT Members internal data analysis shows high number of rejections from TFMS when attempting to send estimated time updates due to ETE rule violation.**
- **CETE modification allows for correction of erroneous data and supports program stability.**
- **Existing known substitution rules appear solid.**
- **Eliminating CETE modification permission could drive more problems than improvements.**

